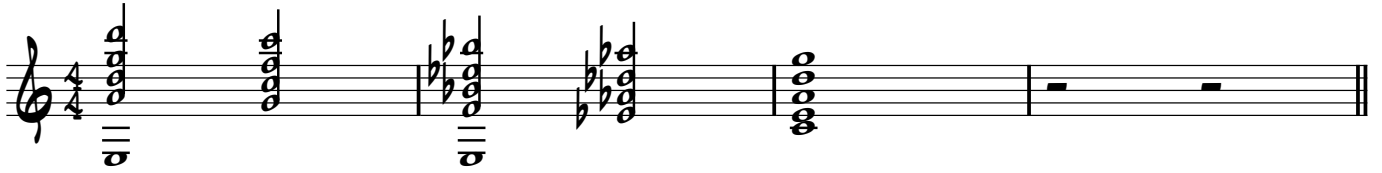
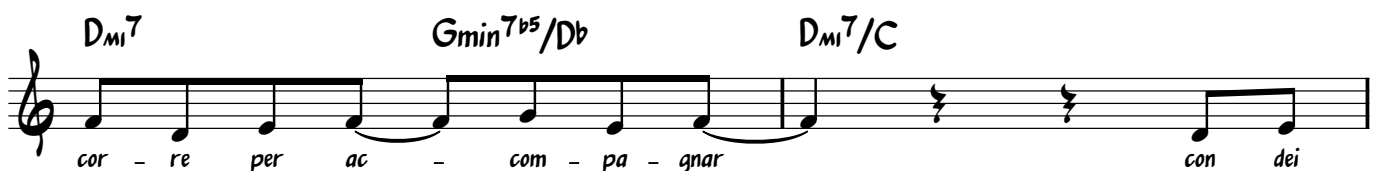


Il cantore tibetano



Verse



A2 C⁶ E⁷/B A_{mi}⁷ D_{mi}⁷ G_{min}^{7b5}/D^b D_{mi}⁷/C



G/B G⁷/D C⁶ C/E F⁶ F_{mi}⁶ C⁶



B C^{#6} C⁶ E⁷/B B^{b6} A⁷



D⁷ G⁷



A3 C⁶ E⁷/B A_{mi}⁷



D_{mi}⁷ D^bdim⁷ D_{mi}⁷/C



G/B G⁷/D C⁶ C/E



A^{b7}/E^b G⁷/D G⁷



Bridge

Bridge

C⁶ A_m7 D_m7 G⁷ E_m7 E^b7 D_m7 D^b7

D.S. al Fine 3
Fine

Throat singing on G fundamental